

Paper Title

(Times New Roman, 24pt, Title Case, After 12pt)

First Author¹, Second Author^{2*}, Third Author³

¹ Department Name of Organization (of Affiliation), University/Institution Name, City, Country

² Department Name of Organization (of Affiliation), University/Institution Name, City, Country

³ Department Name of Organization (of Affiliation), University/Institution Name, City, Country

*Corresponding Author: author@gmail.com

Abstract

This electronic document is a “live” template and already defines the components of your paper [title, text, heads, etc.] in its style sheet.

**CRITICAL: Do Not Use Symbols, Special Characters, Footnotes, or Math in Paper Title or Abstract. (Abstract)*

Your abstract should give readers a brief summary of your article with single paragraph. It should concisely describe the contents of your article, and include key terms. It should be informative, accessible and not only indicate the general scope of the article but also state the main results obtained and conclusions drawn. The abstract should be complete in itself; it should not contain undefined abbreviations and no table numbers, figure numbers, references or equations should be referred to. It should be suitable for direct inclusion in abstracting services and should not normally be more than 250 words.

Keywords

Term1, term2, term3, term4, etc. (4-6 keywords, alphabetical arrangement)

INTRODUCTION (HEADING 1)

(Times New Roman, 10pt, Bold, UPPERCASE, Center, Before & After Space 12&4)

This template, modified in MS Word 2021 and saved as a “Word Document” for the PC, provides authors with most of the formatting specifications needed for preparing electronic versions of their papers. The Manuscript length should contain 5 pages at least. In general, a full manuscript consists of **"Introduction", "Objectives", "Methods", "Results", "Discussion" and "Conclusions"**. English is treated as the only written language throughout the text. Margins, column widths, line spacing, and type styles are built-in; examples of the type styles are provided throughout this document and are identified in italic type, within parentheses, following the example. Some components, such as multi-leveled equations, graphics, and tables are not prescribed, although the various table text styles are provided.

EASE OF USE (HEADING 2)

(Times New Roman, 10pt, Bold, UPPERCASE, Center, Before & After Space 12&4)

Selecting A Template (Level 1)

(Times New Roman, 10pt, Title Case, Left, Before & After Space 6&3)

First, confirm that you have the correct template for your paper size. This template has been tailored for output on the A4 paper size. If you are using US letter-sized paper, please close this file and download the Microsoft Word, Letter file.

Maintaining the Integrity of the Specifications (Level 1)

(Times New Roman, 10pt, Title Case, Left, Before & After Space 6&3)

The template is used to format your paper and style the text. All margins, column widths, line spaces, and text fonts are prescribed; please do not alter them. You may note peculiarities. For example, the head margin in this template measures proportionately more than is customary. This measurement and others are deliberate, using specifications that anticipate your paper as one part of the entire proceedings, and not as an independent document. Please do not revise any of the current designations.

MATERIALS AND METHODS (HEADING 3)

(Times New Roman, 10pt, Bold, UPPERCASE, Center, Before & After Space 12&4)

Present the research design, research type, research duration, inclusion/exclusion criteria, choice of subjects, etc. Describe the methodology completely, including sample collection, processing, lab analysis, statistical tests used for data analysis etc. Use section headings/subheadings in a logical order to entitle each category or method. A maximum of three levels of headings

may be used. Usually, headings are numbered with Arabic numerals (1., 2.; 1.1., 1.2.; 1.1.1., 1.2.1....). It's preferred to illustrate with tables and figures.

FIGURES & TABLES (HEADING 4)

(Times New Roman, 10pt, Bold, UPPERCASE, Center, Before & After Space 12&4)

Positioning Figures and Tables (Level 1)

(Times New Roman, 10pt, Title Case, Left, Before & After Space 6&3)

Place figures and tables at the top and bottom of columns. Avoid placing them in the middle of columns. Large figures and tables may span across both columns. Figure captions should be below the figures; table heads should appear above the tables. Insert figures and tables after they are cited in the text. Use the abbreviation “Fig. 1”, even at the beginning of a sentence.

Table 1. Example of a figure caption. (figure caption).

Table Head	Table Column Head		
copy	Table column subhead	Subhead	Subhead
copy	More table copya		

Figure Labels: Use 8 point Times New Roman for Figure labels. Use words rather than symbols or abbreviations when writing Figure axis labels to avoid confusing the reader. As an example, write the quantity “Magnetization”, or “Magnetization, M”, not just “M”. If including units in the label, present them within parentheses. Do not label axes only with units. In the example, write “Magnetization (A/m)” or “Magnetization {A[m(1)]}”, not just “A/m”. Do not label axes with a ratio of quantities and units. For example, write “Temperature (K)”, not “Temperature/K”.

Figures Caption (Level 1)

(Times New Roman, 10pt, Title Case, Left, Before & After Space 6&3)

Each figure should have a caption. The caption should be concise and typed separately, not on the figure area; If figures have parts (for example, A and B), make sure all parts are explained in the caption.

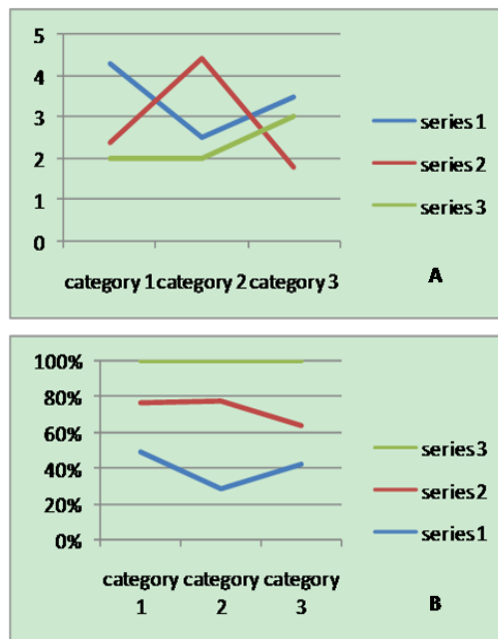


Figure 1. Part A and Part B

Figures, Numbering & Citation (Level 1)

(Times New Roman, 10pt, Title Case, Left, Before & After Space 6&3)

All figures are to be sequentially numbered with Arabic numerals. Figures should always be cited in consecutive numerical order. (Figure 1) Parts in a figure can be identified by A, B, C etc. and cited as Fig. 2A, Fig. 2B, Fig. 2C. For larger figures or tables (8.4cm ≤ Width ≤ 17cm), you may put them in one column. (Figure 3 & Table 1)

Figures Resolution

Figures must be created at a minimum resolution of 300 dpi to avoid bad printing quality. For fuzzy or jagged figures, authors are required to replace it or send the original figure file to us for reproduction.

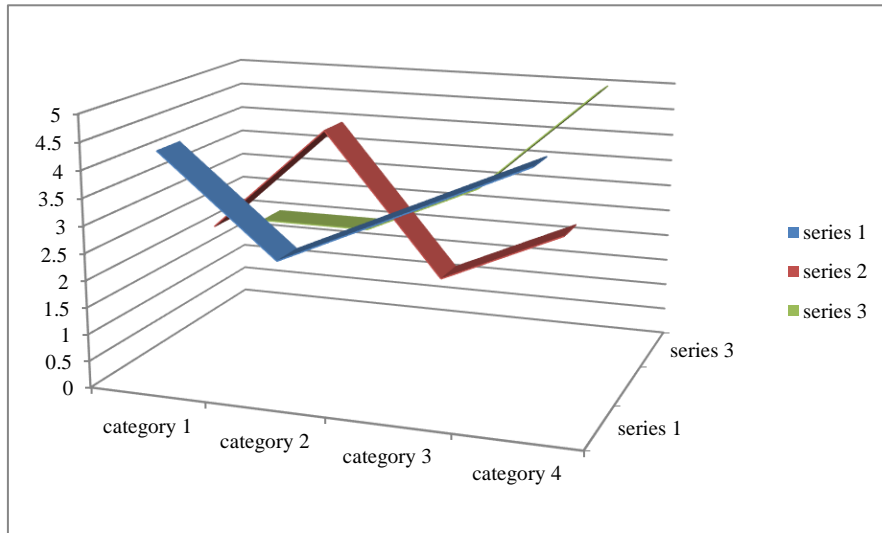


Figure 2. A large figure in one column

Table 2. Specific data of Column/Row

	Column Header 1	Column Header 2
Row Header 1	X	X
Row Header 2	X	X

Tables (Level 1)

(Times New Roman, 10pt, Title Case, Left, Before & After Space 6&3)

Tables Title (Level 2)

(Times New Roman, 10pt, Title Case, Left, Italic, Before & After Space 6&3)

Every table must have a unique title placed at the top. Titles should be clear and concise, and they should not be complete sentences.

Tables Format (Level 2)

(Times New Roman, 10pt, Title Case, Left, Italic, Before & After Space 6&3)

Table tools in Microsoft Word are recommended for inserting a table. It's necessary to avoid tables created with the tab key.

Tables Numbering & Citation (Level 2)

(Times New Roman, 10pt, Title Case, Left, Italic, Before & After Space 6&3)

Tables in the main body of the text should be numbered consecutively according to its appearance in the text. Cite each table in numerical order.

Equation (Level 1)

(Times New Roman, 10pt, Title Case, Left, Before & After Space 6&3)

Equation Format (Level 2)

(Times New Roman, 10pt, Title Case, Left, Italic, Before & After Space 6&3)

The equation number should be placed in parentheses to the right of the equation. Do not create equations as pictures. Use MathType or insert symbols as normal text.

Equation as normal text:

$$E=MC^2 \tag{1}$$

Equation created by MathType:

$$f(x) = a_0 + \sum_{n=1}^{\infty} \left(a_n \cos \frac{n\pi x}{L} + b_n \sin \frac{n\pi x}{L} \right) \tag{2}$$

Equation Numbering & Citation (Level 3)

(Times New Roman, 10pt, Title Case, Left, Before & After Space 6&3)

Equations should be numbered consecutively with Arabic numerals to avoid ambiguities, if they will be referred to in text. Citation for an equation should be made by using “(1),” not “Eq. (1)” or “equation (1),” except at the beginning of a sentence: “Equation (1) is...”

Appendix

An appendix may be included (and is often helpful) in mathematical or computational modeling.

Acknowledgements

We are very grateful to experts for their appropriate and constructive suggestions to improve this template. Avoid the stilted expression “one of us (R. B. G.) thanks ...”. Instead, try “R. B. G. thanks...”. Put sponsor acknowledgments in the unnumbered footnote on the first page.

REFERENCES

(Times New Roman, 10pt, Bold, UPPERCASE, Left, Before & After Space 12&4)

In this section, References for the work which is done by author has to list out. Avoid unpublished references. Check the author names, Year of Publications, usage of et al, punctuation etc. The reference

(Times New Roman, 9pt, text justified with number in set bracket like [1].)

Examples:

- [1]. **[For an article in a journal]** Goss, R. O., 1990, Economic policies and seaports: strategies for port authorities. *Maritime Policy and Management*, 17(4), 273-287.
- [2]. **[Book]** Frankel, E. G., 1987, *The World Shipping Industry* (London, U.K.: Croom Helm).
- [3]. **[Chapter in a book]** Friesz, T. L., 1981, The multi objective optimization in transportation: the case of equilibrium network design. In: Organizations: Multiple Agents with Multiple Criteria, edited by J. N. Morse. *Lecture Notes in Economics and Mathematical Systems*, Vol. 190 (NewYork: Springer-Verlag), pp. 116-127.
- [4]. **[Report, proceedings, and unpublished literature (a)]** Tan, H., Gershwin, S., and Athans, M., 1979, Hybrid optimization in urban traffic networks. MIT Report Dot-TSC-RSPA-79-7.
- [5]. **[Report, proceedings, and unpublished literature (b)]** Asakura, Y., and Sasaki, T., 1990. Formulation and feasibility test of optimal road network design model with endogenously determined travel demand. Proceedings of the 5th World Conference on Transport Research, Yokohama, Japan, July, pp. 351-365
- [6]. **[Report, proceedings, and unpublished literature (c)]** Yang, H., Bell, M. G. H., and Meng, Q., 1997, Equilibrium zone reserve capacity under network capacity constraints. Working paper, The Hong Kong University of Science and Technology.
- [7]. **[Newspaper or magazine]** Smith, A., 1996, Labour ditches plans to re-regulate buses. Financial Times, 30 December.
- [8]. **[Internet source (with title, date of access and the universal resource locator in full)]** UNO, Charter of the United Nations (Preamble), Date of access: 21/11/2012. <http://www.un.org/en/documents/charter/preamble.shtml>.
- [9]. **[Government legislation (a)]** US CONGRESS, Senate Committee on Foreign Relations, 1956, The Mutual Security Act of 1956, 84th Congress, second session, report 2273.
- [10]. **[Government legislation (b)]** UNITED KINGDOM PARLIAMENT, Committee on the Working of the Monetary System [Radcliffe Committee] 1960, Principal Memoranda of Evidence, vol. 2, Cmd 1958.
- [11]. **[Government legislation (c)]** UNITED NATIONS GENERAL ASSEMBLY, Secretariat for Economic Affairs, 1951, Methods of Financing Economic Development in Less Developed Countries, report II B2.

NOTE: Citation of the reference used in the manuscript should need to be in numbering format [1, 2] instead of using reference author's name (john 1989).

Reference information in the reference part should need to be modified according to the citation number instead of using alphabetical order.

General Instructions

1. Alignment format should be Single Columns.
2. Title: not too long below 20 words, Times New Roman 24-point, Centered. Capitalize the first letter of nouns, pronouns, verbs, adjectives, and adverbs; do not capitalize articles, coordinate conjunctions, or prepositions.
3. File format should in word (.doc, .docx), and strictly should not be converted from pdf file.
4. Abstract should 250 words with keywords (4 to 6)
5. Page Layout: 8.5 x 11-inch paper; for A4 paper
6. Use Times News Roman font style for full article.
7. Capitalize only the first word in all the section level headings
8. First-level headings: **Times New Roman, 10pt, Bold, Title Case, Left, Before & After Space 6pt & 3pt.**
9. Second-level headings: *Times New Roman, 10pt, Bold, Title Case, Left, Italic, Before & After Space 6pt & 3pt.*
10. Third-level headings: *Times New Roman, 10pt, Title Case, Left, Regular Italic, Before & After Space 6pt & 3pt.*
11. Fourth-level headings: Times New Roman, 10pt, Title Case, Left, Before & After Space 6pt & 3pt.
12. Reference: Use Times New Roman; 9pt.
13. Acknowledgements should be brief and placed at the end of the text before the references.
14. All paragraph's first line should be indented approximately 0.14 inch or 0.36 cm.
15. Author names and affiliations are to be centered beneath the title and printed in Times New Roman 12-point, boldface type. Multiple authors may be shown in a two or three-column format, with their affiliations below their respective names. Affiliations are centered below each author name, not bold. Include e-mail addresses if possible.